






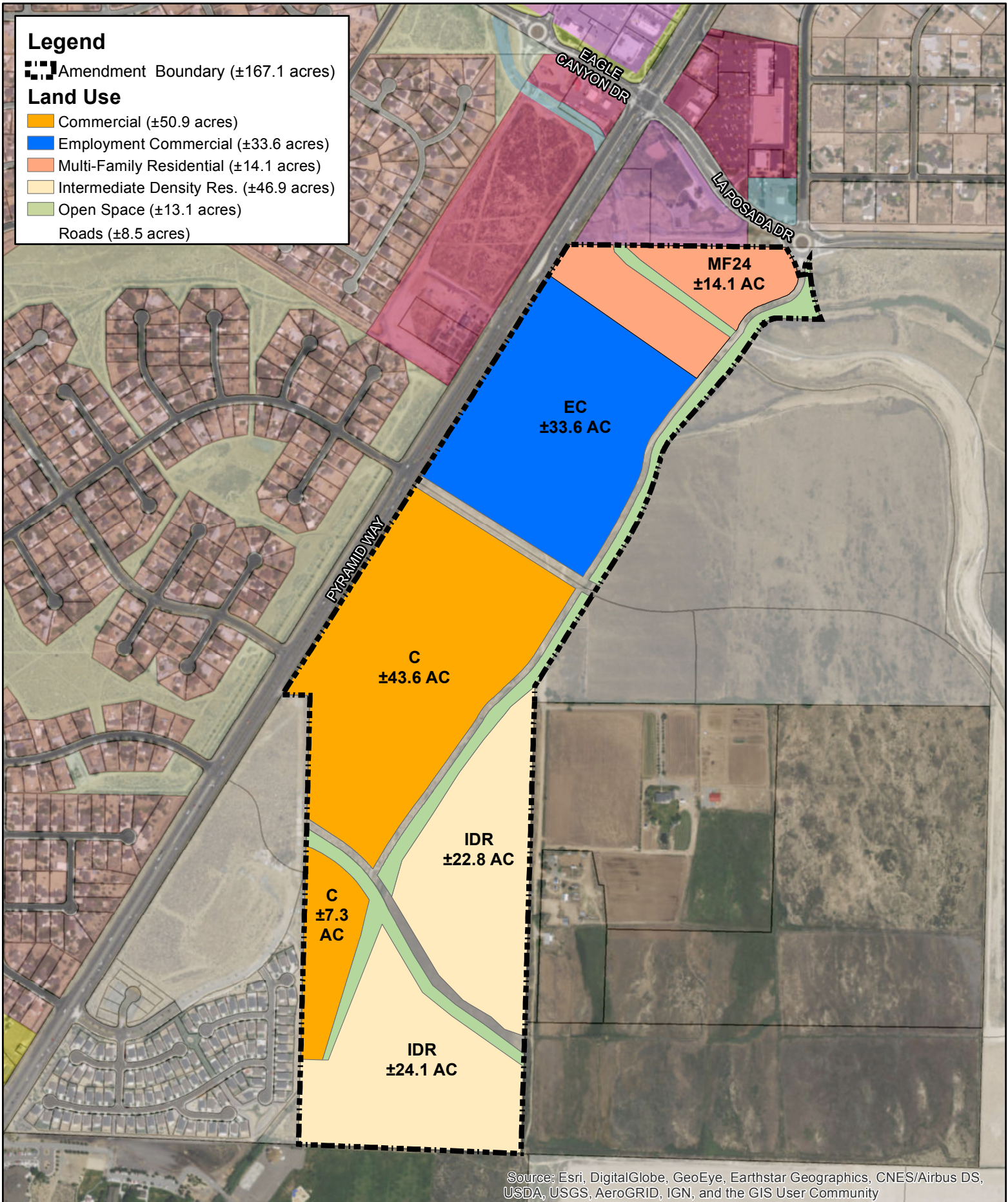


Legend

 Amendment Boundary (±167.1 acres)

Land Use

-  Commercial (±50.9 acres)
-  Employment Commercial (±33.6 acres)
-  Multi-Family Residential (±14.1 acres)
-  Intermediate Density Res. (±46.9 acres)
-  Open Space (±13.1 acres)
-  Roads (±8.5 acres)



Source: Esri, DigitalGlobe, GeoEye, Earthstar Geographics, CNES/Airbus DS, USDA, USGS, AeroGRID, IGN, and the GIS User Community



Existing Master Plan

Stonebrook Planned Development

City of Sparks



WOOD RODGERS
BUILDING RELATIONSHIPS ONE PROJECT AT A TIME

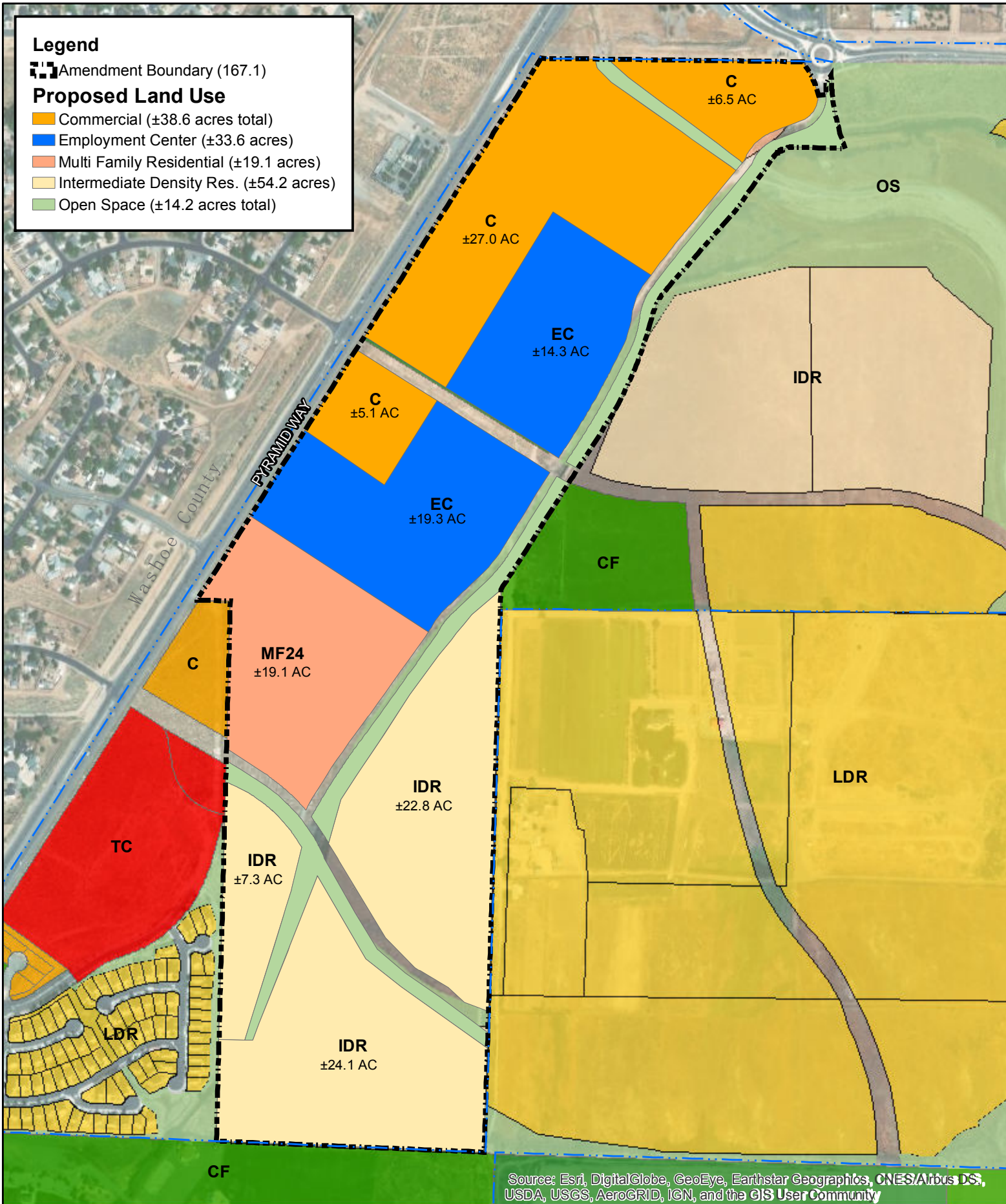
Exhibit 2

Legend

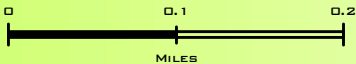
Amendment Boundary (167.1)

Proposed Land Use

- Commercial (±38.6 acres total)
- Employment Center (±33.6 acres)
- Multi Family Residential (±19.1 acres)
- Intermediate Density Res. (±54.2 acres)
- Open Space (±14.2 acres total)



Source: Esri, DigitalGlobe, GeoEye, Earthstar Geographics, CNES/Airbus DS, USDA, USGS, AeroGRID, IGN, and the GIS User Community



Proposed Master Plan

Stonebrook Planned Development

City of Sparks



WOOD RODGERS
BUILDING RELATIONSHIPS ONE PROJECT AT A TIME

Exhibit 3